

Oliver Bermes
Packaging Finished Art



Client: Coca Cola
Agency: Passport Design

Substrate: Aluminium Can
Number of Colours: 3, incl. White

132XXXXX

© 2010 THE COCA-COLA COMPANY. LOVINGLY CRAFTED BY COCA-COLA AMATIL (AUST.) PTY LTD, 102 BRIENS ROAD, NORTHMEAD NSW 2152 AUSTRALIA. UNDER AUTHORITY OF THE COCA-COLA COMPANY, OWNER OF THE TRADE MARKS "DIET COCA-COLA", "DIET COKE" AND THE DYNAMIC RIBBON DEVICE. THIS IS **NOT** A FULLY IRRESISTIBLE LOW CALORIE COLA DRINK CONTAINS CARBONATED PURIFIED WATER, FLAVOUR, COLOUR (CARAMEL, FD01), FOOD ACIDS (338, 330), SWEETENERS (951, 950), PRESERVATIVE (217), CAFFEINE. CONTAINS CAFFEINE. CONTAINS PHENYLETHANAMINE. MADE IN AUSTRALIA FROM IMPORTED LOCAL INGREDIENTS. STORE IN A COOL PLACE. FOR BEST BEFORE DATE SEE BASE OF CAN. CONSUMER INFORMATION PLEASE CALL 1 800 025 123 OR WWW.COCA-COLA.COM.AU

10c REFUND AT COLLECTION

a quality product of The Coca-Cola Company www.livethepositively.com.au

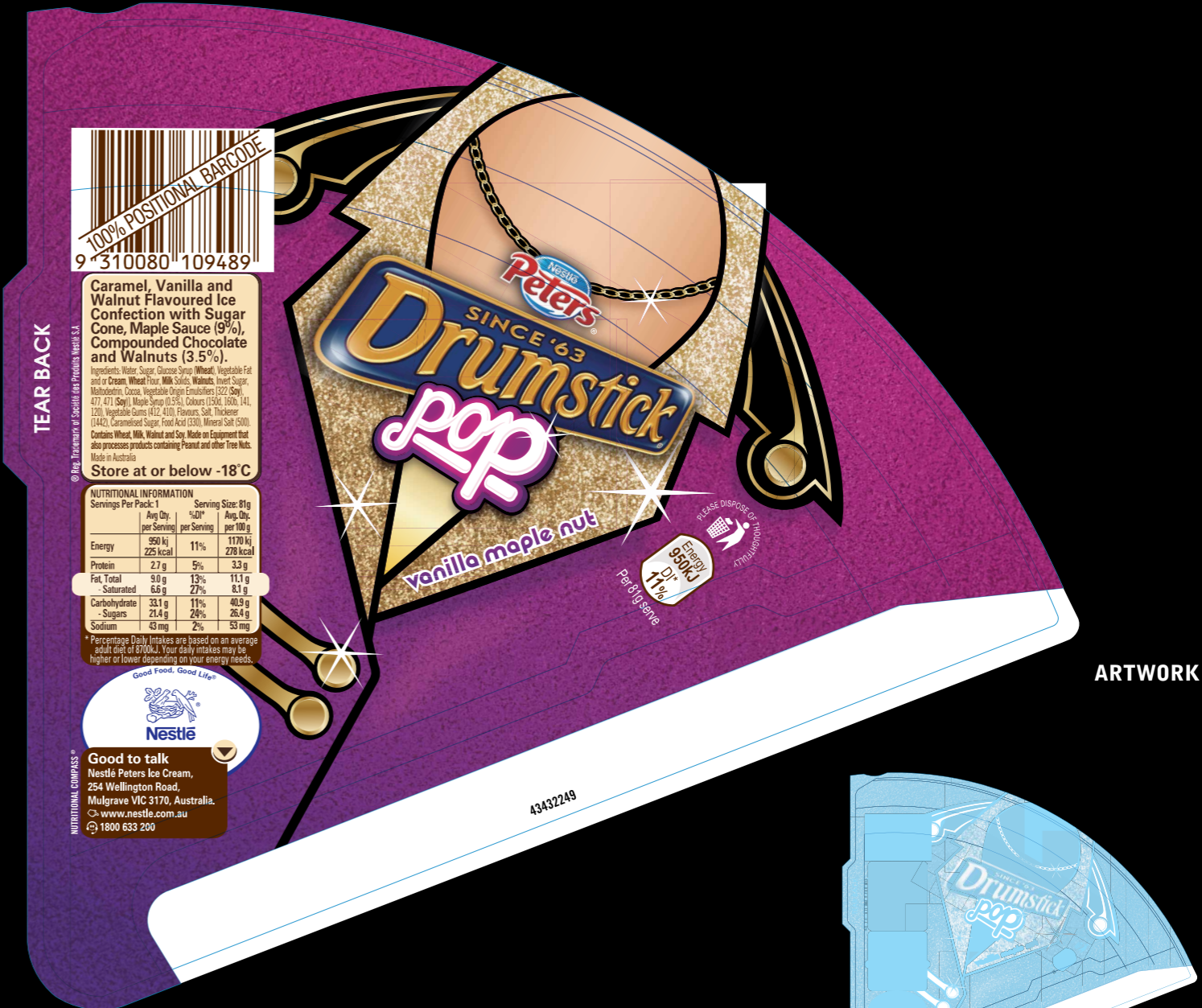
Recycle

NUTRITION INFORMATION
 Servings per package: 1
 Serving size: 375 mL

Ave. Quantity	per Serving	%DI*	per 100 mL
Energy	15.6 kJ	0.1	15.6 kJ
Protein	1.5 g	0.4	0.4 g
Fat, total	0.2 g	0.4	0.06 g
- saturated	0.0 g	0.0	0.0 g
Carbohydrates	0.4 g	0.1	0.1 g
- sugars	0.0 g	0.0	0.0 g
Dietary Fibre	0.0 g	0.0	0.0 g
Sodium	56 mg	2	15.0 mg

*% DAILY INTAKE PER SERVE IS BASED ON THE DYNAMIC RIBBON DEVICE. DAILY INTAKE MAY BE HIGHER OR LOWER DEPENDING ON YOUR ENERGY NEEDS

BARCODE
 85%
 9300675011419



100% POSITIONAL BARCODE
9 310080 109489

Caramel, Vanilla and Walnut Flavoured Ice Confection with Sugar Cone, Maple Sauce (9%), Compounded Chocolate and Walnuts (3.5%).
 Ingredients: Water, Sugar, Glucose Syrup, Wheat, Vegetable Fat and or Cream, Wheat Flour, Milk Solids, Walnuts, Invert Sugar, Maltodextrin, Cocoa, Vegetable Origin Emulsifiers (E22, E50y, 477, 471, 471 (Soy)), Maple Syrup (10.5%), Colours (E150a, E160b, E141, E120), Vegetable Gums (E412, E410), Flavours, Salt, Thickeners (E442), Caramelised Sugar, Food Acid (E330), Mineral Salt (E500).
 Contains Wheat, Milk, Walnut and Soy. Made on Equipment that also processes products containing Peanut and other Tree Nuts.
 Made in Australia.
Store at or below -18°C

NUTRITIONAL INFORMATION

	Serving Size: 81g	
	Avg Qty. per Serving	%DI* per Serving
Energy	950 kJ 225 kcal	11%
Protein	2.7 g	5%
Fat, Total	9.0 g	13%
- Saturated	6.6 g	27%
Carbohydrate	33.1 g	11%
- Sugars	21.4 g	24%
Sodium	43 mg	2%

*Percentage Daily Intakes are based on an average adult diet of 8700kJ. Your daily intakes may be higher or lower depending on your energy needs.

Good Food. Good Life®

Nestlé
 Good to talk
 Nestlé Peters Ice Cream,
 254 Wellington Road,
 Mulgrave VIC 3170, Australia.
 www.nestle.com.au
 1800 633 200

ARTWORK

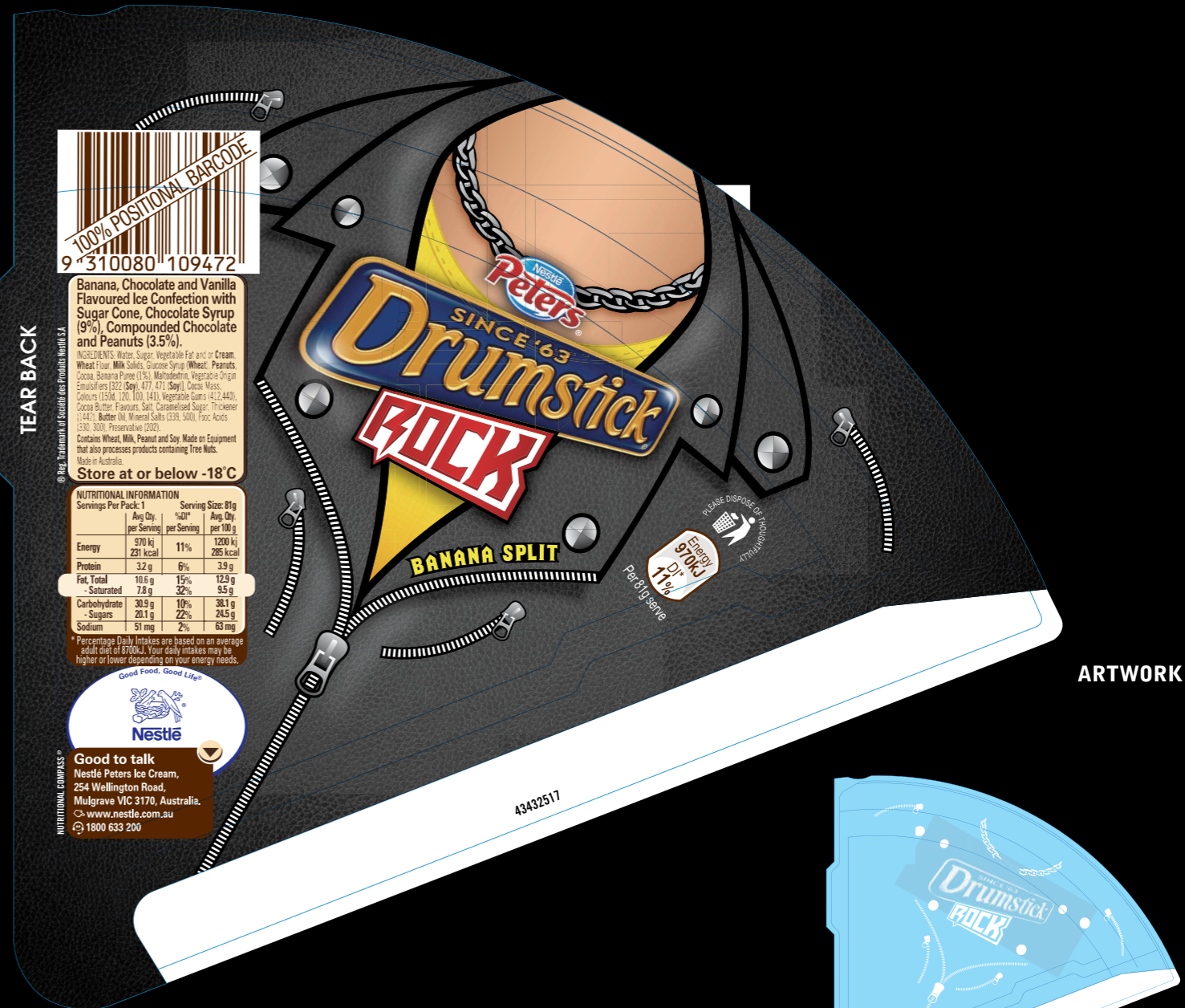
Client: Nestlé Peters

Agency: Passport Design

Substrate: Cardboard/Metallized Paper

Number of Colours: 6 (MP), 7 (SP) incl. White

WHITE DOWN



Client: Nestlé Peters

Agency: Passport Design

Substrate: Cardboard/Metallized Paper

Number of Colours: 6 (MP), 7 (SP) incl. White

ARTWORK

WHITE DOWN



Electrolyte Enhanced Advanced Hydration.

POWERADE[®] ZERO

SPORTS DRINK ZERO SUGAR

POWERADE
ZERO
HYDRATING
THE AUSTRALIAN
OLYMPIC TEAM

600mL BERRY ICE[®]

ENERGY 798kJ
D1 9%
PER 600mL SERVE

NUTRITION INFORMATION
SERVINGS PER PACKAGE: 1 SERVING SIZE: 600mL

AVERAGE QUANTITY	PER SERVING	%DI*	PER 100mL
ENERGY	798 kJ (181 CAL)	9	133 kJ (32 CAL)
PROTEIN	0 g	0	0 g
FAT, TOTAL	0 g	0	0 g
- SATURATED	0 g	0	0 g
CARBOHYDRATES	46 g	15	7.6 g
- SUCROSE	36 g	40	6.0 g
- MALTODEXTRIN	9.6 g		1.6 g
DIETARY FIBRE	0 g	0	0 g
SODIUM	167 mg (7.2 mmol)	7	28 mg (1.2 mmol)
POTASSIUM	85 mg (2.4 mmol)		14.1 mg (0.4 mmol)

*% DAILY INTAKE PER SERVE IS BASED ON AN AVERAGE ADULT DIET OF 8700 KJ. YOUR DAILY INTAKE MAY BE HIGHER OR LOWER DEPENDING ON YOUR ENERGY NEEDS
www.makeeverydropmatter.com.au

© 2009 THE COCA-COLA COMPANY, PREPARED AND BOTTLED BY COCA-COLA AMATL (AUST.) PTY LTD, 102 BRIENS ROAD, NORTHMEAD NSW 2152 AUSTRALIA, UNDER AUTHORITY OF THE COCA-COLA COMPANY, OWNER OF THE TRADE MARKS 'POWERADE', 'MOUNTAIN BLAST' AND 'THE POWER TO REACH YOUR GOAL'. CONTAINS: WATER, SUCROSE, MALTODEXTRIN, FOOD ACIDS (330, 331), FLAVOUR, TRI-POTASSIUM CITRATE, SODIUM CHLORIDE, TRI-POTASSIUM PHOSPHATE, COLOUR (133). MADE IN AUSTRALIA FROM IMPORTED AND LOCAL INGREDIENTS. FOR BEST BEFORE DATE SEE NECK OF BOTTLE. TO HELP PREVENT AND TREAT MILD DEHYDRATION DRINK 250mL EVERY 15 MINUTES DURING SUSTAINED STRENUOUS EXERCISE. AVERAGE OSMOLALITY IS 295 mOsmol/L. STORE IN A COOL PLACE.

CONSUMER INFORMATION
CALL 1 800 025 123

a quality product of
The Coca-Cola Company

APN at 85%

10¢ REFUND AT COLLECTION DEPOTS WHEN SOLD IN S.A. Recycle

ARTWORK

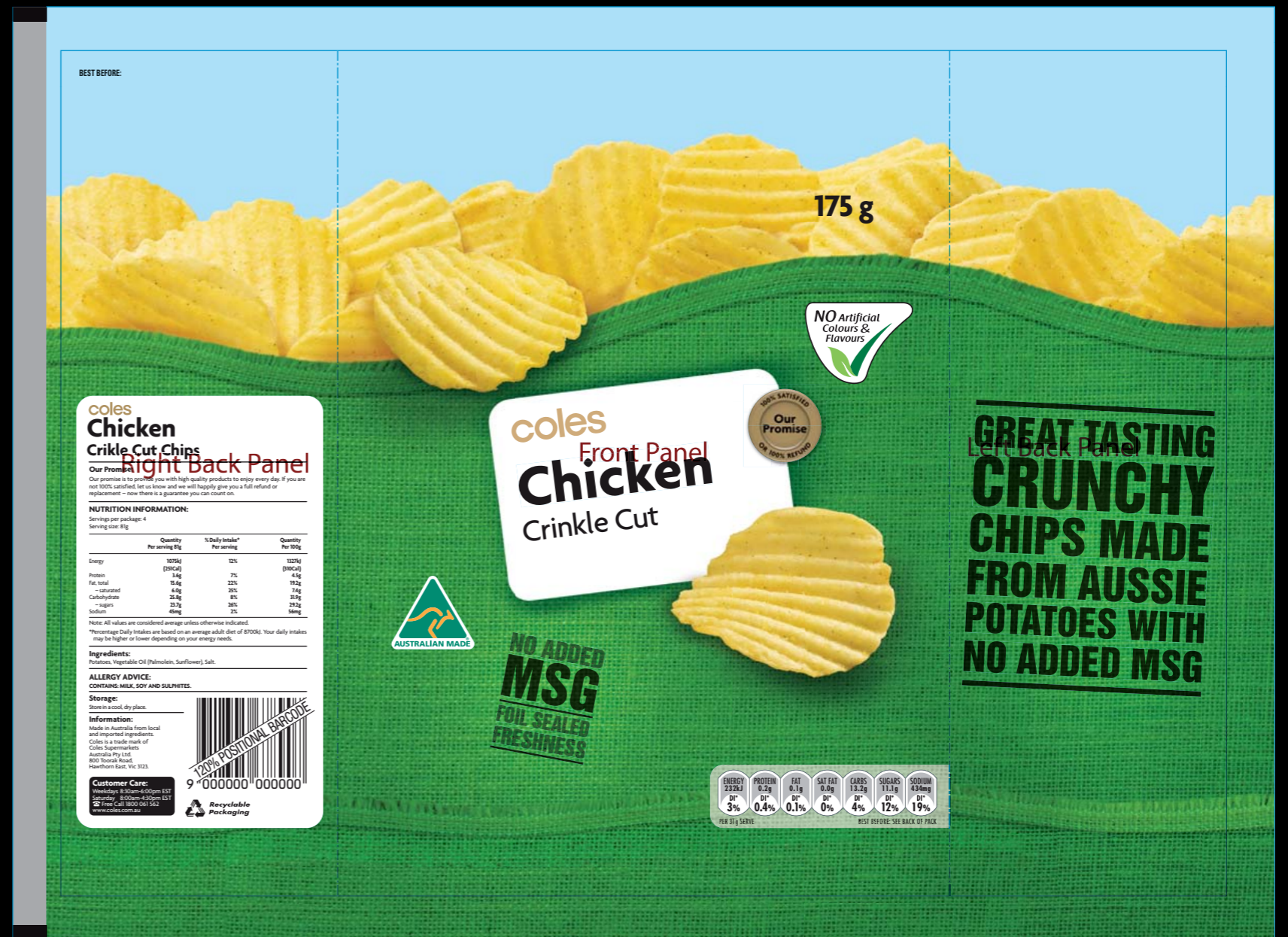
WHITE DOWN

Client: Capi Soda

Substrate: Clear adhesive Film

Agency: Passport Design

Number of Colours: 6, incl. 2 Whites

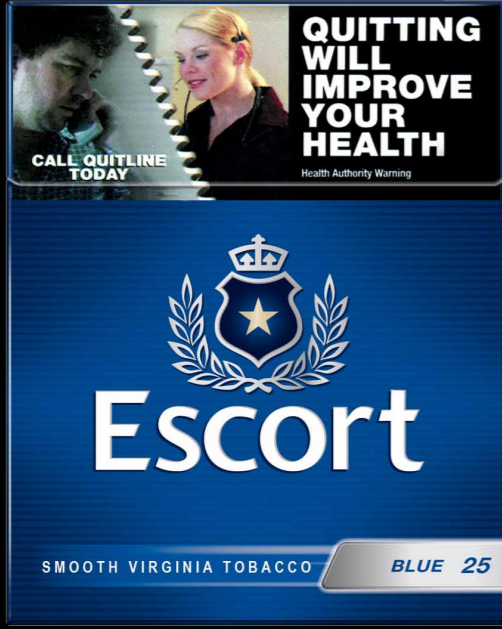


Client: COLES

Substrate: Metal foil

Agency: Jet Brand Design

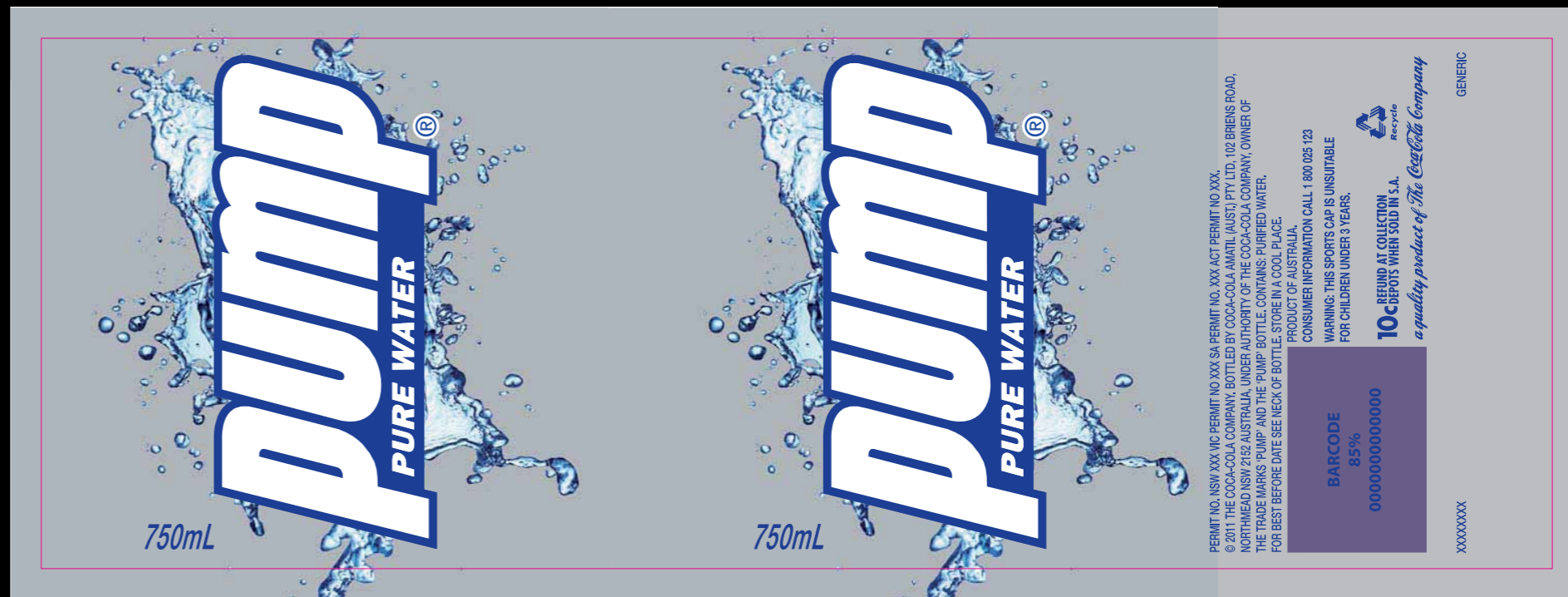
Number of Colours: 7, incl. White



Client: Imperial Tobacco

Agency: Passport Design

Number of Colours: 9



Client: Coca Cola

Substrate: Clear adhesive Film

Agency: Passport Design

Number of Colours: 4, incl. 2 Whites



Client: Nestlé

Agency: Passport Design

Number of Colours: 3



coles
Lollipops

NUTRITION INFORMATION:
 Servings per package: 10
 Serving size: 86g (1 slice)

Quantity Per serving	% Daily Intake*	Quantity Per 100g
Energy 1190kJ (280Cal)	18%	1850kJ (443Cal)
Protein 3.9g	8%	4.5g
Fat, total 22.4g	32%	26.0g
– saturated 3.4g	14%	3.9g
Carbohydrate 38.3g	12%	44.3g
– sugars 25.5g	28%	29.7g
Sodium 105mg	5%	125mg

Note: All values are considered averages unless otherwise indicated and relate to product when prepared as directed.
 *Percentage Daily Intakes are based on an average adult diet of 8700kJ. Your daily intakes may be higher or lower depending on your energy needs.

Ingredients:
 Sugar, Wholemeal Wheat Flour, Wheat Flour (Thiamin), Vegetable Palm Shortening (Antioxidant (B19)), Oak Fibre, Walnuts (2%), Maize Thickener (E422), Dried Carrot (2.2%), Spices, Raising Agent (E500), Sugar, Wheaten Cornflour, Cream Cheese Powder (Cream Solids, Milk Solids, Sugar, Emulsifier (E471), Mineral Salt (E331), Salt, Antioxidant (E306 (Soy)), Culture), Flavour.

ALLERGY ADVICE:
 CONTAINS GLUTEN, MILK, SOY AND TREE NUTS.

Storage:
 Store in a cool, dry place.

Best Before:

Client: COLES

Substrate: Clear Bags

Agency: Jet Brand Design

Number of Colours: 7, incl. White

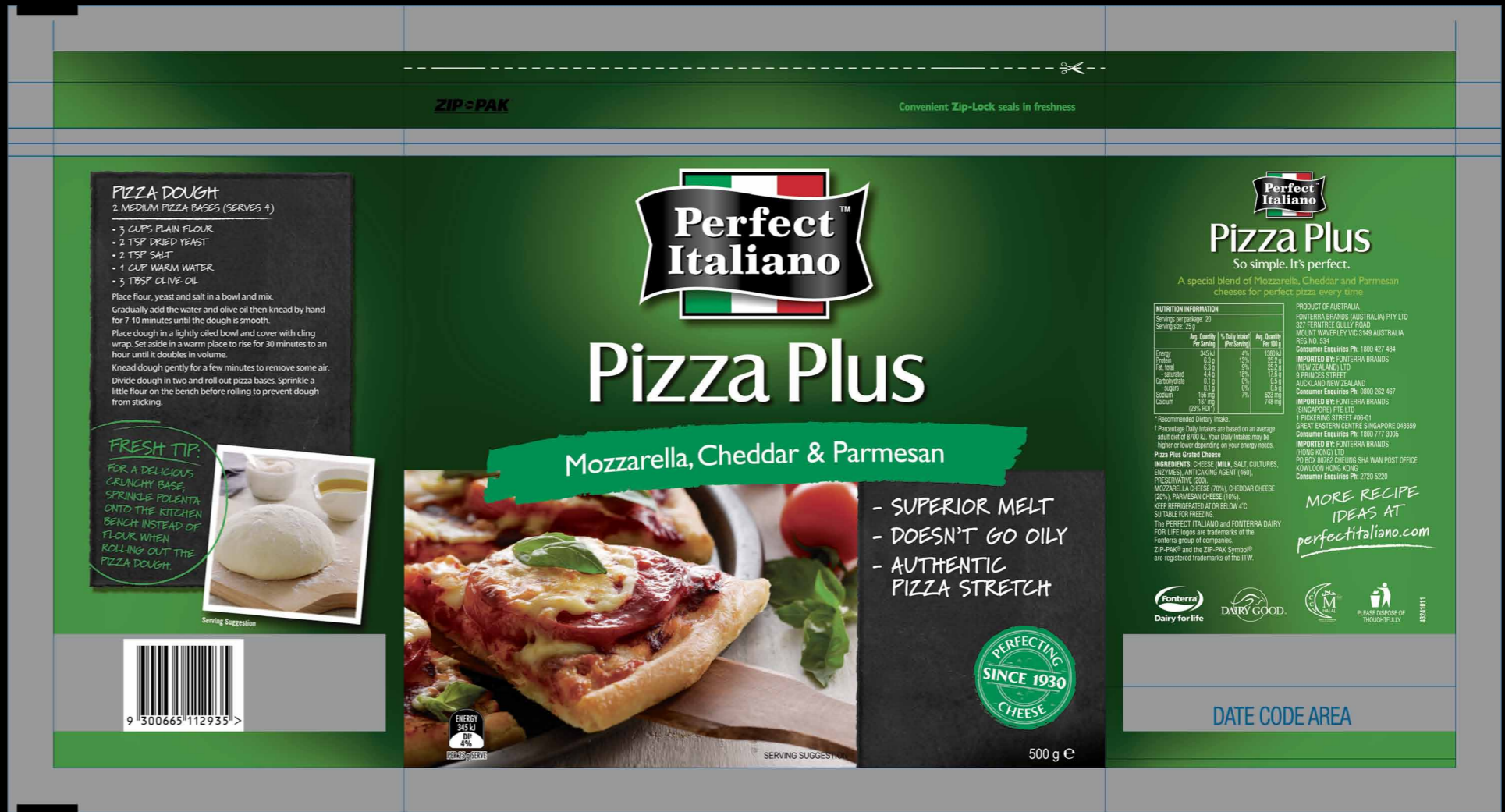


Client: Fonterra

Substrate: In-Mould Labels

Agency: Passport Design

Number of Colours: 6



Client: Fonterra

Substrate: Clear Zip-Lock Bags

Agency: Passport Design

Number of Colours: 8, incl. White



Client: Riviana

Agency: Passport Design

Number of Colours: 6, incl. 2nd Black



capi FRUIT + SODA

MADE WITH REAL INGREDIENTS.
PURIFIED CARBONATED WATER, SUGAR, CONCENTRATED BLOOD ORANGE JUICE (10%), ACID (CITRIC), NATURAL FLAVOURS, NATURAL COLOURS (120, 1600).

CAPI IS CHEMICAL FREE
SODIUM BENZOATE 211 FREE, ASPARTAME 951 FREE, POTASSIUM SORBATE 202 FREE, PHOSPHORIC ACID 338 FREE, ARTIFICIAL COLOUR FREE, ARTIFICIAL FLAVOUR FREE... BE FREE. DRINK CHEMICAL FREE

FRESH LOCAL PTY LTD, 2-4 BUCKHURST ST, SOUTH MELBOURNE, VIC 3205, MADE IN AUSTRALIA FROM LOCAL AND IMPORTED INGREDIENTS.
www.capisoda.com

WHAT'S ON THE INSIDE...

SERVINGS PER PACKAGE: 1
SERVING SIZE: 250 mL

AVERAGE QUANTITY	PER SERVING	PER 100 mL
ENERGY	515kJ (123Cal)	206kJ (49Cal)
PROTEIN	0.2g	0.1g
FAT TOTAL	0.0g	0.0g
-SATURATED	0.0g	0.0g
CARBOHYDRATE	29.8g	11.9g
-SUGAR	29.8g	11.9g
SODIUM	0.1mg	0.1mg

10¢ REFUND AT COLLECTION DEPOTS WHEN SOLD IN SA.

REFRESHINGLY UNCOMPLICATED FRESH

capi

BLOOD ORANGE + SODA

250mL 211 PRESERVATIVE FREE

MADE IN OZ
NATURALLY BETTER FOR YOU
MADE WITH SIMPLY THE BEST INGREDIENTS

ARTWORK

capi FRUIT + SODA

MADE WITH REAL INGREDIENTS.
PURIFIED CARBONATED WATER, SUGAR, CONCENTRATED BLOOD ORANGE JUICE (10%), ACID (CITRIC), NATURAL FLAVOURS, NATURAL COLOURS (120, 1600).

CAPI IS CHEMICAL FREE
SODIUM BENZOATE 211 FREE, ASPARTAME 951 FREE, POTASSIUM SORBATE 202 FREE, PHOSPHORIC ACID 338 FREE, ARTIFICIAL COLOUR FREE, ARTIFICIAL FLAVOUR FREE... BE FREE. DRINK CHEMICAL FREE

FRESH LOCAL PTY LTD, 2-4 BUCKHURST ST, SOUTH MELBOURNE, VIC 3205, MADE IN AUSTRALIA FROM LOCAL AND IMPORTED INGREDIENTS.
www.capisoda.com

WHAT'S ON THE INSIDE...

SERVINGS PER PACKAGE: 1
SERVING SIZE: 250 mL

AVERAGE QUANTITY	PER SERVING	PER 100 mL
ENERGY	515kJ (123Cal)	206kJ (49Cal)
PROTEIN	0.2g	0.1g
FAT TOTAL	0.0g	0.0g
-SATURATED	0.0g	0.0g
CARBOHYDRATE	29.8g	11.9g
-SUGAR	29.8g	11.9g
SODIUM	0.1mg	0.1mg

10¢ REFUND AT COLLECTION DEPOTS WHEN SOLD IN SA.

REFRESHINGLY UNCOMPLICATED FRESH

capi

+ SODA

250mL 211 PRESERVATIVE FREE

MADE IN OZ
NATURALLY BETTER FOR YOU
MADE WITH SIMPLY THE BEST INGREDIENTS

WHITE DOWN

Client: Capi Soda

Substrate: Clear adhesive Film

Agency: Passport Design

Number of Colours: 6, incl. 2 Whites



Client: COLES

Agency: Jet Brand Design

Number of Colours: 7, Opal Print

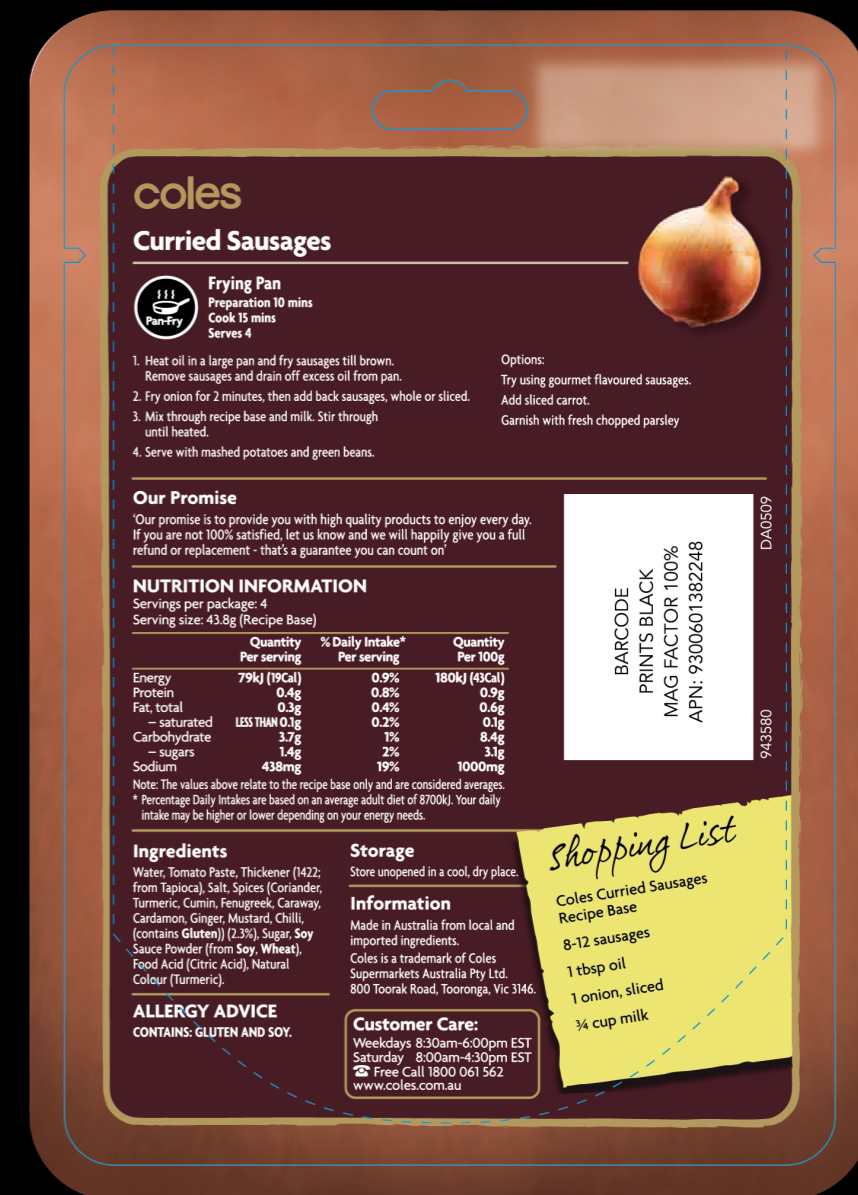


Client: COLES

Substrate: White Poly

Agency: Jet Brand Design

Number of Colours: 5



Client: COLES

Substrate: metallized Paper

Agency: Jet Brand Design

Number of Colours: 8, incl. White